

## **ACTING ON EVIDENCE**

Knowledge. Response. Prevention.

15-17 May 2018 · Sofitel Sydney Wentworth

# **Whatever it takes: Access for women with disabilities to domestic and family violence services. Translating knowledge together**

**Patsie Frawley** Deakin University

**Jane Rosengrave** Deakin University

**Linda Stokoe** Deakin University



**One size does not fit all -  
just like with a t-shirt.**

When it does not fit it does not feel right.

## Whatever it takes: translating knowledge together

**Academic researchers:** Associate Professor Patsie Frawley, Deakin University; A/Prof Sue Dyson, La Trobe University; Dr Sally Robinson, Southern Cross University & Dr Amie O'Shea Research Assistant, Deakin University

**Research partners:** Women with Disabilities Victoria – Keran Howe and the Victorian CASA Forum- Dagmar Jenkins

**Advisory group:** People with Disabilities Australia, AWAVA, DVRC NSW, Advocacy for Inclusion

**Consultative research group-** women with disabilities: Linda Stokoe, Heather Forsyth, Janice Slattery, Meredith Allan, Jane Rosengrave

**Translating Knowledge workshop - WDV:** Julie Brassington, Jen Hargraves, Lisa Bruntis, Linda Stokoe, Jane Rosengrave; 1800RESPECT Hannah Taylor and Libbi Cunningham; Monica Wellington Deakin University

## Whatever it takes: Translating knowledge together

- Aims of the ‘Whatever it takes’ research
- Doing the research together: women with disabilities in the research:
- Key findings – the 4 big ideas!
- Translating the findings - resources for women with disabilities and domestic and family violence services
- Dissemination

## Whatever it takes: Translating knowledge together

### Aims

Development of research informed practice guidelines for tertiary response services:

- Based on a thorough and critical review of evidence concerning world best practice;
- Informed by the experiences of Australian women with disabilities;
- Developed in collaboration with locally based cross-sector communities of practice;

## ACTING ON EVIDENCE

Knowledge. Response. Prevention.

15–17 May 2018 · Sofitel Sydney Wentworth

## Whatever it takes: Translating knowledge together

### Inclusive approach:

- A shift away from research **‘on’** to research **‘with’** people with a disability (Walmsley & Johnson, 2003; Johnson, 2009). Research as a space of invitation for inclusion of the voices of people **‘on the fringes of the disability [and DV] narrative’** (Milner & Mirfin-Vietch (2012) and an opportunity to be **‘reciprocally responsive’** (Milner & Frawley, inpress) to the experiences and expertise of women with disabilities



# ACTING ON EVIDENCE

Knowledge. Response. Prevention.

15-17 May 2018 · Sofitel Sydney Wentworth

## Whatever it takes: Translating knowledge together

**Whatever It Takes**  
Access for women with disabilities to domestic and family violence services  
Dyson, S., Frawley, P & Robinson, S (2017)

**One size does not fit all - just like with a t-shirt.**  
When it does not fit it does not feel right.

**Accessible services are:**  
**Approachable:** This means women know the service is there, you can find it, get to it and you feel OK going there.  
**Acceptable & Appropriate:** This means it fits for the woman, she gets to say if it is working for her.  
**Affordable:** It should not cost you money to get there, to be there and to go as often as you need to.  
**Available:** This means it is there for YOU and you can use it like other women do.

**Involve women with disabilities in the service.**  
Hear and use women's stories in the service.  
The voice doesn't only tell a story, it has an owner.  
Develop peer support groups for women.  
Collaborate with women with disabilities and women with disability advocacy organisations to shape services.  
Include women with disabilities on the board and other planning groups in the service.

**Services need to work together.**  
You pack the t-shirt and take it everywhere you go - it stretches and changes with you. Services can see it and don't need to ask you what t-shirt you want.

**Collect and use information about the experiences of women with a disability WITH women with disability.**  
**Data collection** Asking us about our experiences.  
**Data translation** Working together to get the word out about doing things better.  
**Data analysis** Involving us in talking about what can be learned from our experiences.

**ANROWS**  
ANROWS is a national research organisation dedicated to understanding and preventing violence against women and their children.  
ANROWS welcomes feedback on how our information is being used  
enquiries@anrows.org.au

[\\homes.deakin.edu.au  
\\patsief\\My  
Documents\\ANROWS\\K  
TE\\Whatever-It-Takes-  
Access-Resource  
FINAL.3.pdf](https://homes.deakin.edu.au/patsief/MyDocuments/ANROWS/KTE/Whatever-It-Takes-Access-ResourceFINAL.3.pdf)



## ACTING ON EVIDENCE

Knowledge. Response. Prevention.

15–17 May 2018 · Sofitel Sydney Wentworth



### Accessible services are:

**Approachable:** This means women know the service is there, you can find it, get to it and you feel OK going there.

**Acceptable & Appropriate:** This means it fits for the woman, she gets to say if it is working for her.

**Affordable:** It should not cost you money to get there, to be there and to go as often as you need to.

**Available:** This means it is there for YOU and you can use it like other women do.

Learn  
more  
about  
access

## Whatever it takes: Translating knowledge together

Access is more than ‘getting into’ the service.

Think about more than the physical environment – use the 4 A’s to understand access from the experience of women with disabilities

## ACTING ON EVIDENCE

Knowledge. Response. Prevention.

15–17 May 2018 · Sofitel Sydney Wentworth

## Whatever it takes: Translating knowledge together

### Involve women with disabilities in the service.

- Hear and use women's stories in the service.
- The voice doesn't only tell a story, it has an owner.
- Develop peer support groups for women.
- Collaborate with women with disabilities and women with disability advocacy organisations to shape services.
- Include women with disabilities on the board and other planning groups in the service.



The voice has an owner – get to know the ‘whole’ woman with a disability and include her beyond her ‘client’ role.

‘Nothing about us without us’



## **ACTING ON EVIDENCE**

Knowledge. Response. Prevention.

15-17 May 2018 · Sofitel Sydney Wentworth

## **Whatever it takes: Translating knowledge together**

### **Services need to work together.**

You pack the t-shirt and take it everywhere you go - it stretches and changes with you. Services can see it and don't need to ask you what t-shirt you want.



**Each service needs to take the time to ‘see’ the woman and understand her without asking her to tell her story over and over again.**

***“You pack the t-shirt and take it everywhere you go”***

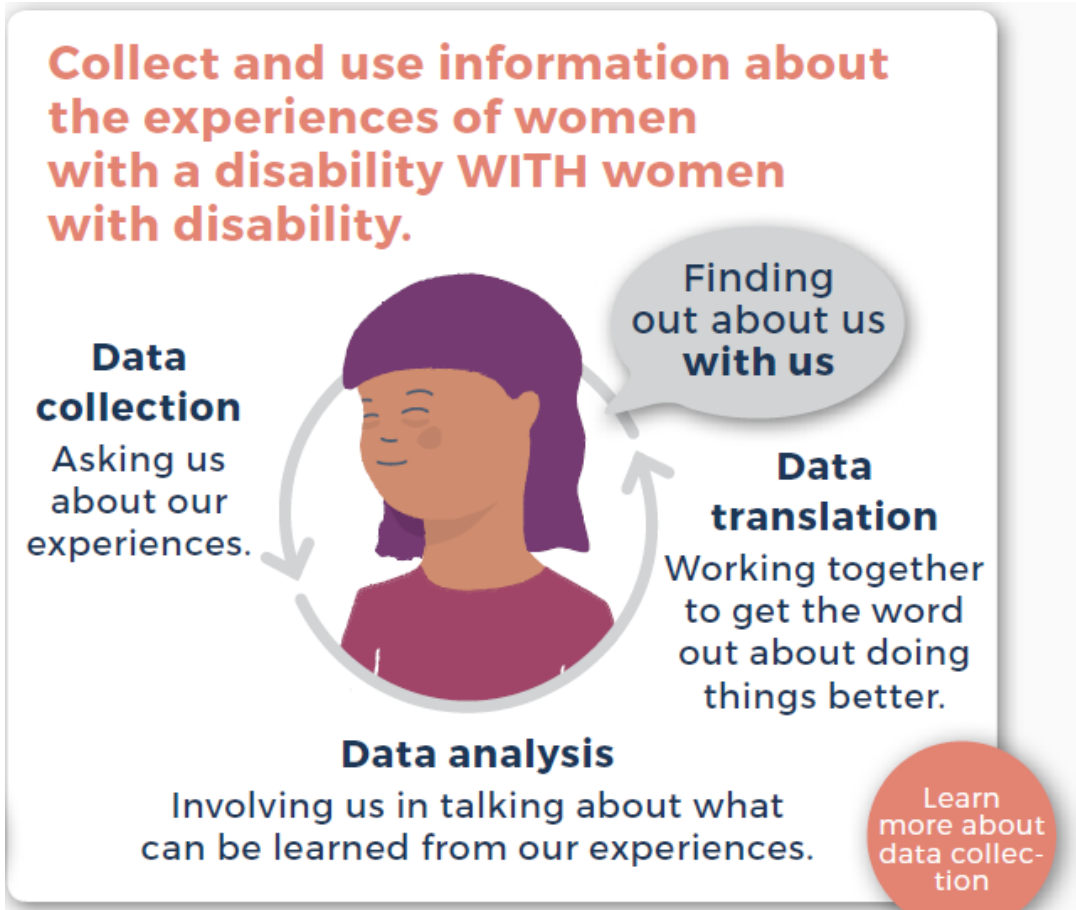
# ACTING ON EVIDENCE

Knowledge. Response. Prevention.

15–17 May 2018 · Sofitel Sydney Wentworth

## Whatever it takes: Translating knowledge together

Women with disabilities need to be counted or people won't know they experience violence and abuse and need help too



## **Whatever it takes: Translating knowledge together**

Getting the  
findings and  
resource out there

### **At this conference:**

- Our presentation
- The poster
- The interactive resource on the conference app

### **After this conference**

- 1800RESPECT project
- other presentations (if you want us to)
- Some papers, workshops with women with disabilities and other conferences

# ACTING ON EVIDENCE

Knowledge. Response. Prevention.

15-17 May 2018 · Sofitel Sydney Wentworth

# Thank you

**Getting in contact with us**  
[patsie.Frawley@deakin.edu.au](mailto:patsie.Frawley@deakin.edu.au)

